



18 Old Oak Common Lane,
Acton
London
W3 7EL
T: 020 8749 9798
E: acton@churchillestates.co.uk
www.churchillestates.co.uk



Yewfield Road, London, NW10 9TD

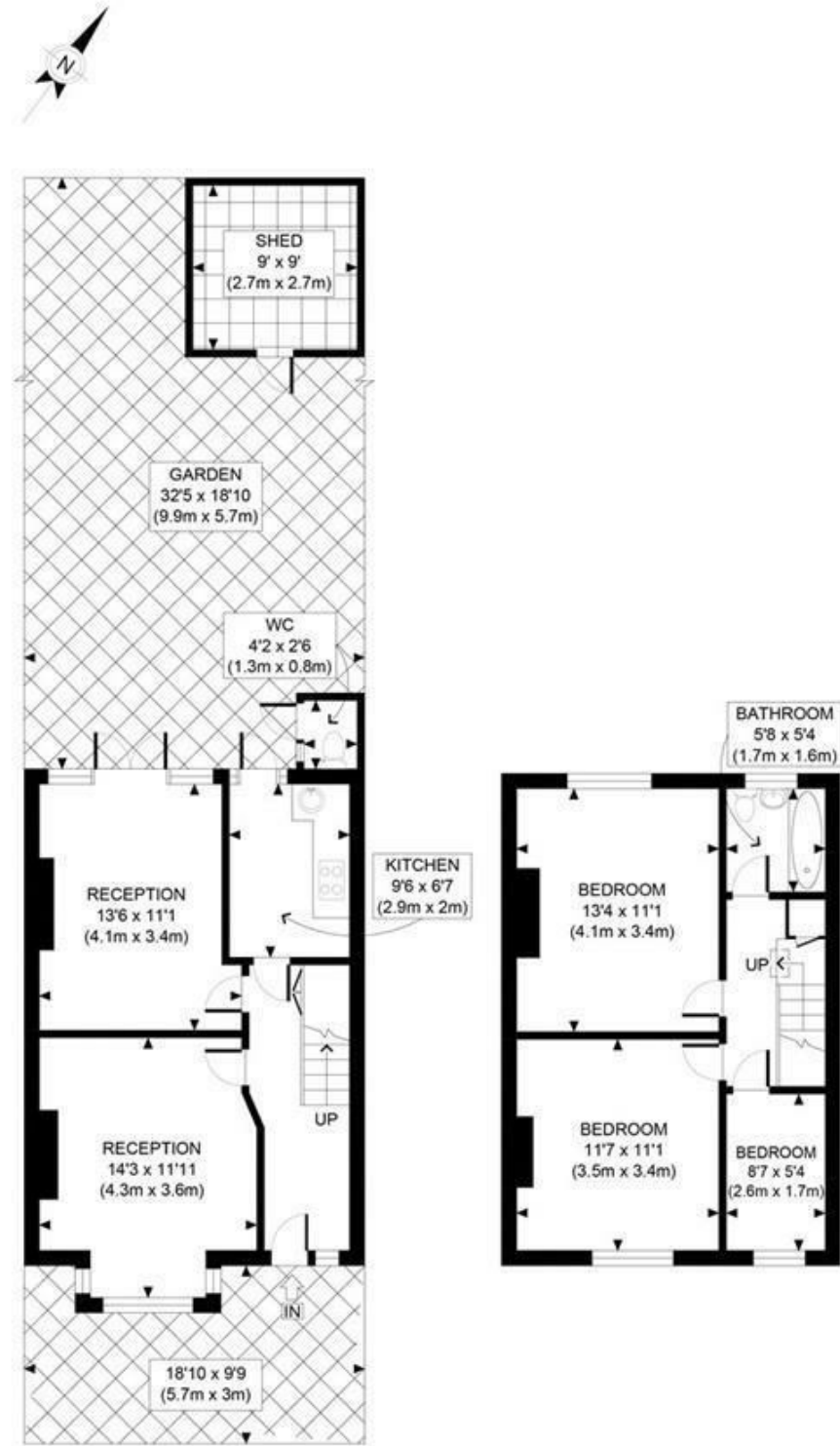
Offers In The Region Of £474,950 Freehold



KEY FEATURES:

- Three bed Mid terraced house
- Priced for early sale
- Two receptions
- Freehold
- All serious offers invited
- No Chain
- ideal investment
- Gardens
- Close to Roundwood Park
- Over 900 sq ft

A SPACIOUS THREE BEDROOM terraced home in a popular road with GARDENS TO FRONT AND REAR. This SUPERB PROPERTY is an ideal buy to let investment and all serious offers for the freehold interest are invited. Offered with no onward chain early viewing is considered essential! The floor area is approximately 880 sq.ft (182 sq.m)



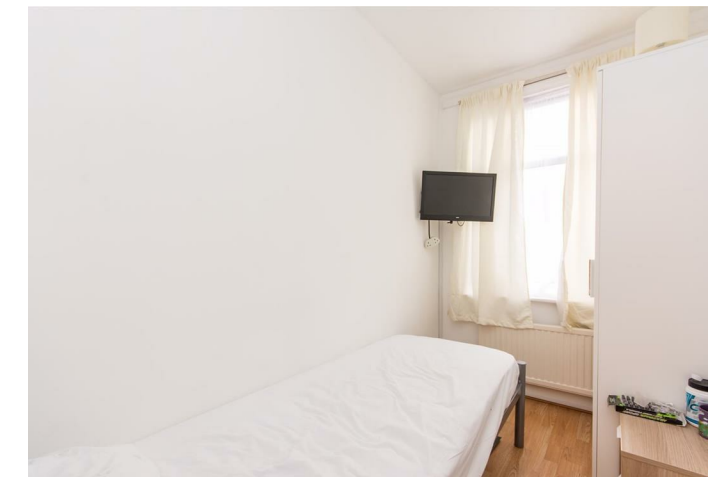
GROSS INTERNAL FLOOR AREA 451 SQ FT

GROSS INTERNAL FLOOR AREA 429 SQ FT

APPROX. GROSS INTERNAL FLOOR AREA 880 SQ FT / 82 SQM

Ref: Copyright **photoplan**

Disclaimer: Floor plan measurements are approximate and are for illustrative purposes only. While we do not doubt the floor plan accuracy and completeness, you or your advisors should conduct a careful, independent investigation of the property in respect of monetary valuation



Whilst every effort is made to give a fair description, the accuracy of these particulars is not guaranteed, neither do they constitute an offer or contract.

CHURCHILL ESTATE AGENTS have not tested any apparatus, equipment, fitting or services and so cannot verify that they are in working order. The buyer is advised to obtain verification from their solicitor or surveyor. Measurements are correct to within +/-6 A sonic tape is used. None of the statements contained in these particulars or any of our properties are to be relied upon as a representation of fact.